

Media Release

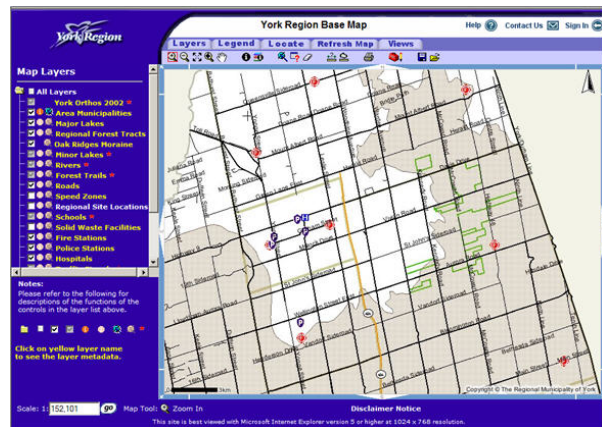
Friday, June 24, 2005

The Regional Municipality of York launches new YorkAtlas

YORK REGION ENHANCES ONLINE GEOMATICS DATA TOOLS

NEWMARKET – At its first Information Technology Day, York Region launched a new enhanced version of YorkAtlas, a component of YorkExplorer, the Region’s popular Internet mapping site that provides users with the ability to view or create Regional maps based on their topic of interest.

“These enhancements to YorkAtlas deliver the high standards for customer service that our residents demand,” said Regional Chair and CEO Bill Fisch. “From students and teachers to our partners in local municipalities or from our staff across all departments to professionals in the geomatics industry, we all need up-to-date York Region data to facilitate our decision-making, our day-to-day work, and the education of our school children.”



YorkAtlas allows users to access detailed information, measure distances, view photographs of the Region taken from the air, and interactively create their own maps. The new version includes:

- Large map views
- Faster and more detailed searches
- Portable Document Format (PDF) technology which improves printing of maps
- Ability to comment on and annotate maps
- Easy saving of maps for future use

In addition to YorkAtlas, YorkExplorer makes geographic information available to the public through three other tools:

- YorkMaps is a library of maps illustrating a number of themes, including recreational, health, infrastructure and environmental information
- YorkLocator lets the user locate addresses, intersections or facilities including regional offices, schools and hospitals
- YorkCatalogue functions the same way that a card catalogue works in a library through a keyword search, providing information about York Region maps, geographic information, applications and web map services.

... Continued on Page 2

... Page 2

YorkAtlas was developed with support from GeoConnections, a national partnership initiative led by Natural Resources Canada. YorkExplorer incorporates common web services and standards recommended by the Canadian Geospatial Data Infrastructure to make Canada's geographic information readily accessible online.

These enhancements to YorkAtlas were presented to York Regional Council yesterday.

To access YorkExplorer, click on the “Maps” icon in the yellow menu bar at the top of York Region’s main page at www.york.ca

For more information on GeoConnections and the Canadian Geospatial Data Infrastructure, please visit www.cgdi.ca For more information on The Regional Municipality of York, the services we offer and links to our nine area municipalities, please visit our Web site at www.york.ca

-30-

Contact: Tim Paleczny, Corporate Communications Services, York Region
(905) 830-4444 or (416) 297-9696, ext. 1238
tim.paleczny@york.ca